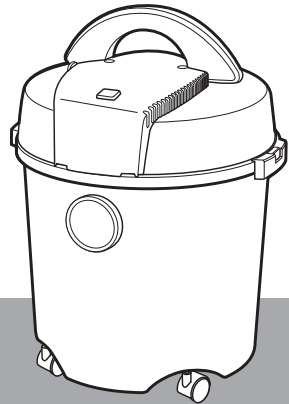


Goblin®

## Boxer wet & dry vacuum cleaner with blower function



Please read and keep these instructions



### getting the best from your new cleaner...

If your cleaner is not picking up as well as it should, please check

- **Filters**

*It is important that the filter is cleaned regularly to allow air through the appliance. Shake to remove dust, the filter can also be washed in cold water and left to air dry.*

*IMPORTANT - Ensure filter is totally dry before refitting into machine.*

- **Blockages**

*Check the tools and hose for blockages.*

- **Accessories**

Some accessories may be stored inside the tank when you unpack the machine. Please check and remove before first use.



# Important safety instructions

---

The use of any electrical appliance requires the following common sense safety rules.

Primarily there is danger of injury or death and secondly the danger of damage to the appliance. These are indicated in the text by the following two conventions:

**WARNING: Danger to the person!**  
**IMPORTANT: Damage to the appliance!** In addition we offer the following safety advice.

## Location

---

- Do not use or keep this product outside when it is raining.
- Do not store the appliance near hot ovens or heating appliances.

## Children

---

- Children do not understand the dangers associated with operating electrical appliances. Never allow children to use this appliance.

## Personal safety

---

- The plug must be removed from the wall socket before cleaning or maintaining the appliance.
- Do not direct the hose at anybody whilst in blower mode.
- Never modify the cleaner in any way.

## Other safety considerations

---

- Never use in the presence of explosive liquids or vapours.
- Never pick up inflammable or poisonous liquids such as petrol, copier toner or other volatile substances. Never pick up acids, asbestos or asbestos dust.
- Repairs to electrical appliances are only to be undertaken by trained personnel. Unprofessional repairs can be dangerous for users.

- Use only genuine Goblin spare parts and accessories.
- If the electrical cable becomes damaged the complete cable assembly must be replaced. Do not attempt this task yourself, contact Goblin using the replacement parts number on the front of this leaflet.
- The appliance must never be left running when unsupervised.
- This vacuum cleaner is intended for domestic use only. Misuse or use for commercial or any other purpose will render the guarantee invalid.

## Product safety

---

- Never use the appliance without the cartridge or foam filter being installed.
- Never use the appliance to vacuum hot ashes, broken glass or sharp objects.
- Never modify the cleaner in any way.
- To protect against fire, electric shock and personal injury do not immerse cord, plug or cleaner in water or other liquid.

## Electrical requirements

---

Check that the voltage on the rating plate of your charger unit corresponds with your house electricity which must be A.C. (alternating current).

If the socket outlets in your home are not suitable for the plug supplied with this appliance the plug should be removed and the appropriate one fitted.

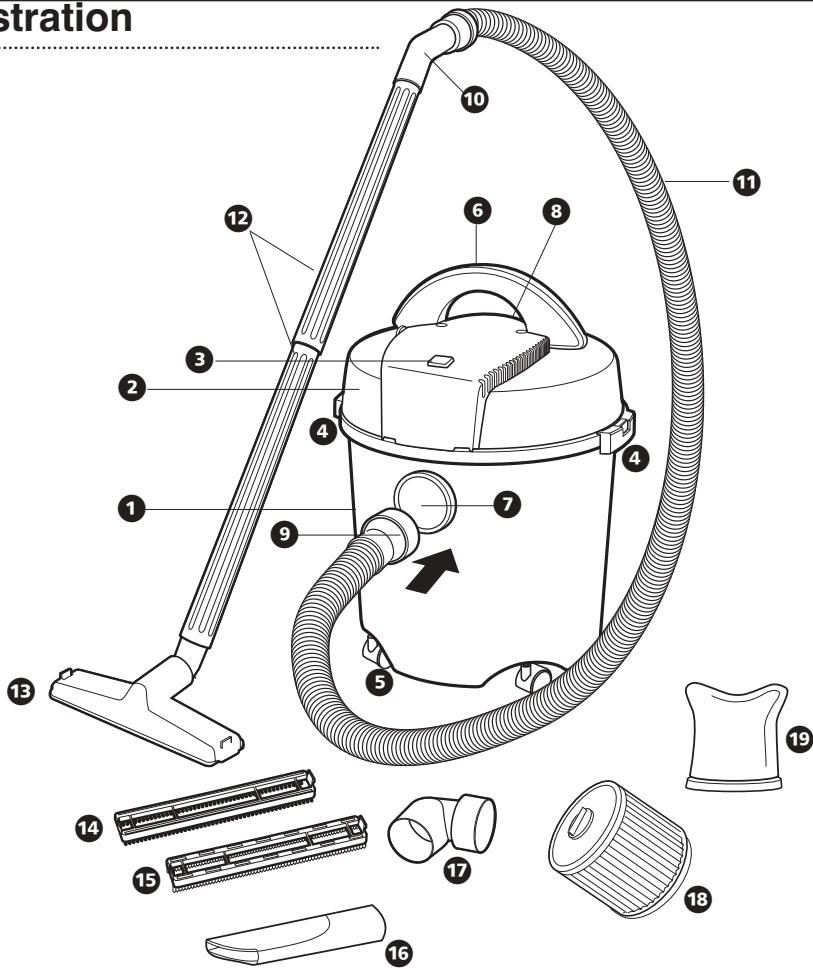
**IMPORTANT: The plug removed from the mains lead, if severed, must be destroyed as a plug with a bared flexible cord is hazardous if engaged into a live socket outlet.**

Should the fuse in the 13 amp plug require changing a 13 amp BS1362 fuse must be fitted.

When using this appliance outdoors it should be additionally protected by a RCCB (Residual Current Circuit Breaker).

# Illustration

A



## Features

- 1 Tank
- 2 Upper body
- 3 On/off switch
- 4 Tank latch
- 5 Castors x 4
- 6 Carrying handle
- 7 Inlet
- 8 Blower outlet (not shown)

## Accessories you should have

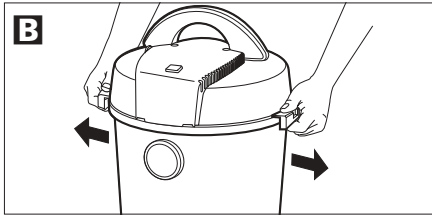
- 9 Hose end
- 10 Hose handle
- 11 Hose
- 12 Extension tubes x 2
- 13 Floor nozzle
- 14 Brush insert
- 15 Squeegee insert
- 16 Crevice tool
- 17 Outlet elbow
- 18 Cartridge filter
- 19 Foam filter

## Features not shown see illustrations to follow

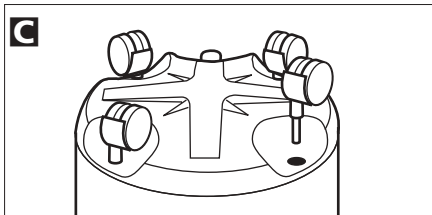
- 20 Cord storage hook
- 21 Tool storage
- 22 Paper bag

# Assembly

- 1 Release the tank latches **4** and lift off the upper body **2**. **B**



- 2 Remove any components stored inside the tank, please see page 3 for the list of accessories you should have.
- 3 Turn the tank upside down.
- 4 Press the castors **5** into the four holes provided. Do not use excess force. **C**

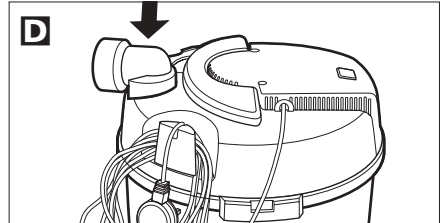


- 5 Refit the upper body **2** and slide the latches **4** back into position.
- 6 Push the hose end **9** firmly into the tank **A**.
- 7 Fit one of the extension tubes **12** into the other end of the hose. If required a second extension tube can now be added and the nozzle fitted into the end. **A**

Nozzle **13** - Recommended for carpets  
 Brush insert **14** - Recommended for hard floors.

Squeegee insert **15** - Recommended for wet pick up.

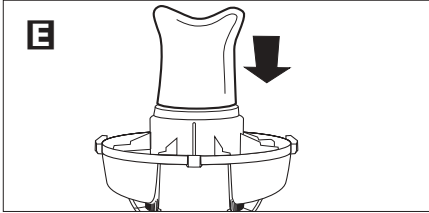
- 8 Fit the outlet elbow **17** into the outlet **8** on the upper body. **D** The outlet elbow can be used to direct the exhaust air. **(The exhaust air must be directed away from people).**



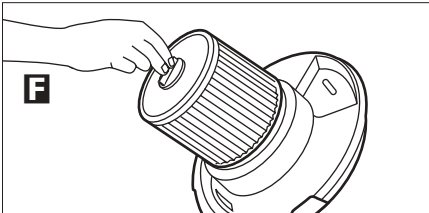
# Filtration

Usage type	Cartridge filter <b>18</b>	Foam Filter <b>19</b>	Paper bag <b>22</b>	Comments
<b>Wet pick-up</b> (large volumes of liquids, floods, spills, blocked drains).	✗	✓	✗	Never use the paper bag for wet pick-up.
<b>Dry pick-up</b> (Household use, wood chips, sawdust, soil, sanding debris).	✓	✗	✓	The paper bag is recommended for extra hygiene and convenient disposal of fine dust. The foam filter can be used in conjunction with the paper bag but should never be used alone for dry pick-up.
<b>Wet and dry pick-up</b> (Combination of both but not large volumes of liquid).	✓	✗	✗	Always use the cartridge filter for combination pick-up.

- **To fit the Foam filter**
- 1 Remove cartridge filter.
  - 2 Slide foam filter fully down over the float cage, located underneath the upper body. **E**
  - 3 Inspect your filter regularly. To clean the filter, remove it from the float cage. If required rinse the filter in cold, water.

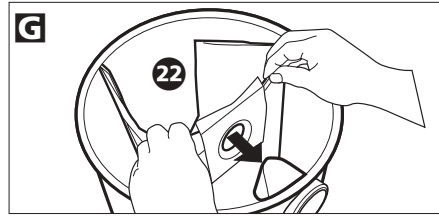


- **To fit the Cartridge filter**
- 1 Position the filter and twist locking nut clockwise **F**



- 2 To remove it turn the locking nut anti-clockwise.
- 3 To clean it, brush the grooves with a soft brush, ensuring you don't damage the surface.
- 4 Inspect your filter regularly and if damaged replace it immediately.
- 5 If used for wet pick-up wash the filter in cold water and thoroughly dry before re-fitting.

- **To fit the Paper bag (if required)**
- 1 To fit the paper bag, place it inside the tank with the bag collar by the inlet. **G**
  - 2 Bend the top of bag collar back at the crease.
  - 3 Push the bag collar over the inlet so that the rubber seal holds the dust bag in place. **G**

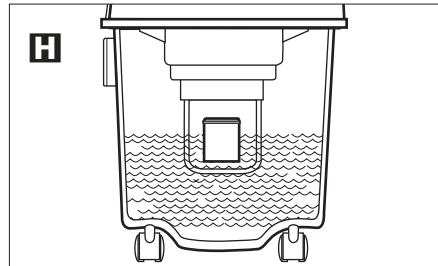


## Operation

- 1 Unwind the lead fully and connect to the mains.
- 2 Switch on using the on/off switch. **B**

## Float shut-off wet use

When the tank is full of liquid the float shut-off valve **H** automatically cuts off the suction which is indicated by a higher pitched noise from the motor. If this occurs:



- 1 Switch the unit OFF and disconnect from the mains.
- 2 Raise hose to drain liquid back into the tank.
- 3 Empty the tank.

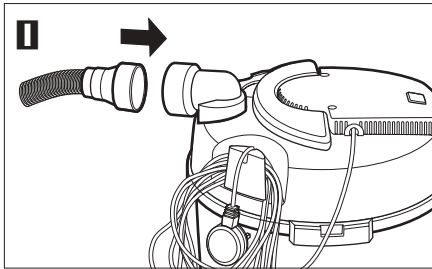
**IMPORTANT:** Do not attempt to remove the float as this is important for safe performance. If the cleaner overturns during use, switch the motor off, return to the upright position and wait until the float falls free.

## Emptying tank/replacing paper bag

- 1 Switch the unit OFF and disconnect from the mains.
- 2 Release the tank latches **B** and lift off the upper body.
- 3 **Option 1** No bag fitted, empty rinse and dry the tank.  
**Option 2** Bag fitted, remove the full bag and replace it with a new bag **G**.
- 4 Check condition of filter and clean if necessary.
- 5 Refit upper body.

## Blower function

The cleaner can be used as a powerful blower by inserting the hose into the outlet elbow **17** on the upper body of the cleaner. **I**

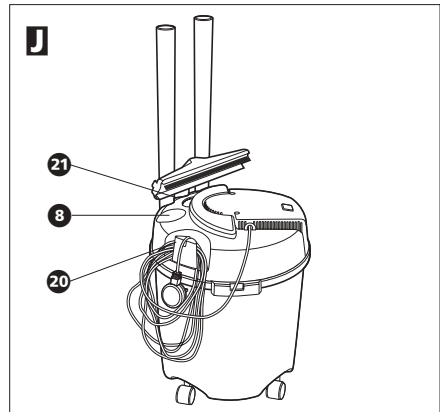


- Always ensure that the hose, tank and accessories have been cleaned of any debris before operating the blower function.
- Uses include: blowing leaves into piles, blower out dust from difficult to get areas, faster drying of paint.
- The blower must not be directed towards people.

## Storage

When not in use, the cable can be stored by wrapping it around the cord hook **20** positioned on the upper body. Hook the end of the cable into the slot provided on the cable hook. **J**

- The extension tubes and nozzle can be stored in the designated areas on top of the cleaner.
- The hose can also be stored by wrapping it around the extension tubes.



## Trouble shooting guide

---

**If a problem occurs always switch the unit off immediately.**

### **1 Motor does not operate.**

- Check the unit is plugged in and switched on.
- Check the fuse in the plug.
- If using extension lead check the fuse in the extension lead.

### **2 Motor operates but cleaner fails to pick up.**

- Check if the cleaner needs emptying.
- Check and clear any blockages within the system.
- Check the filters are clean and not damaged.
- Check the hose is in the correct inlet.

### **3 Motor makes a high pitched noise**

- Check if the cleaner needs emptying because the float valve has operated.

### **4 Water expelled from air exhaust during use.**

- Check that the cartridge or foam filter is fitted.
- Check if the float valve is damaged or jammed.

## Care and maintenance

---

Your cleaner is manufactured to withstand normal day-to-day use, but an occasional wipe over with a damp cloth will help maintain its good looks. Abrasive cleaners should not be used.

## Purchasing filters

---

Use original filters. Replacement packs can be purchased from specialist retailers. If you have difficulty, call the number on the front of this booklet.

## Helpline

---

If you have any difficulty with your appliance do not hesitate to call us. We are likely to be more help than the store from where it was bought. Please have the following information ready to enable our staff to help you.

- Name of product
- Model number as shown on the underside of the appliance.



# Your two year guarantee

**It is important to retain the retailers receipt as proof of purchase.** Staple your receipt to this back cover for future reference.

Please quote the following information if the product develops a fault. These numbers can be found on the base of the product.

Model no.

Serial no.

All Goblin products are individually tested before leaving the factory. In the unlikely event of any appliance proving to be faulty within 28 days of purchase it should be returned to the place of purchase for it to be replaced.

If the fault develops after 28 days and within 24 months of original purchase, you should contact the Helpline number quoting Model number and Serial number on the product, or write to Goblin at the address shown. You will be asked to return the product (in secure, adequate packaging) to the address below along with a copy of proof of purchase. Subject to the exclusions set out below (1-5) the faulty appliance will then be repaired or replaced and dispatched usually within 7 working days of receipt.

If you suspect a fault, follow the simple checks detailed below before returning the appliance or calling the helpline.

- Check the filters for blockages.
- Check the tools for blockages.
- Check the appliance is fully charged.

If for any reason this item is replaced during the 2 year guarantee period, the guarantee on

the new item will be calculated from original purchase date. Therefore it is vital to retain your original till receipt or invoice to indicate the date of initial purchase.

To qualify for the 2 year guarantee the appliance must have been used according to the manufacturers instructions. For example, the filter must be cleaned regularly.

## EXCLUSIONS

Goblin shall not be liable to replace or repair the goods under the terms of the guarantee where:

- 1 The fault has been caused or is attributable to accidental use, misuse, negligent use or used contrary to the manufacturers recommendations or where the fault has been caused by power surges or damage caused in transit.
- 2 The appliance has been used on a voltage supply other than that stamped on the products.
- 3 Repairs have been attempted by persons other than our service staff (or authorised dealer).
- 4 Where the appliance has been used for hire purposes or non domestic use.
- 5 The guarantee excludes consumables such as bags and filters.

This guarantee does not confer any rights other than those expressly set out above and does not cover any claims for consequential loss or damage. This guarantee is offered as an additional benefit and does not affect your statutory rights as a consumer.

- This guarantee is valid in the UK and Ireland only.



# Goblin®

The After Sales Division  
Goblin Ltd, Mexborough  
South Yorkshire, England, S64 8AJ

Helpline (office hours)  
UK 0870 060 2605  
Republic of Ireland 1800 409119

Goblin products are intended for household use only.

Goblin has a policy of continuous improvement in product quality and design. The company, therefore reserves the right to change the specification of its models at any time.